



Marking to ATEX 94/9/EC Directive:  $\text{Ex}$  II 2 G Ex d IIC T5 Gb / II 2 D Ex tb IIIC Db IP66

Zone: 1, 2, 21, 22 , Gas Group IIC

Compliance with: IEC 60079-0 : 2007, IEC 60079-1 : 2007, IEC 60079-31 : 2008

EC Type Examination Certificate: ISSeP 11 ATEX



### FEATURES

- Plug and socket with die cast aluminium housing suitable for petroleum and marine locations.
- Different ratings up to 63 Amp. 2, 3 or 4 pins plus earth.
- Interlocked switched socket contacts on the unit are never accessible when live.
- Switching only possible when plug fully inserted and cannot be withdrawn with switch in ON position.
- Nickel plated brass pins embedded in glass reinforced polyamide pin holder.
- Stainless steel screws and M6 internal / external earth studs.
- Socket closing cover with chain: GRP for 16 or 25 Amp., and aluminium for 32 or 63 Amp.
- Cable entry can be from bottom or top side.
- Hub sizes: M20 or M25 for 16 and 25 Amp., M32 or M40 for 32 or 63 Amp.
- Cable entry threads: ISO 965.1 metric as standard . NPT or other threads supplied on request.
- Finish: Electrostatic powder coated or two pack epoxy paint.



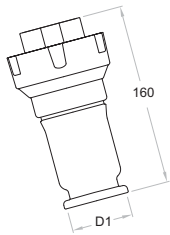
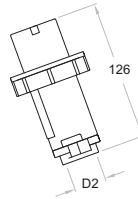
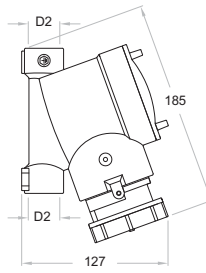
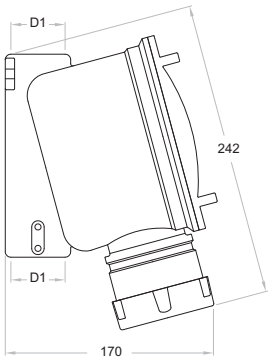
### OPTIONS

- Voltage transformer in Ex 'd' housing for plugs & sockets operating on reduced voltages (24V .... 110V)
- NPT or other threads cable entry.
- Cable gland.



## NMSP.. Sockets and Plugs

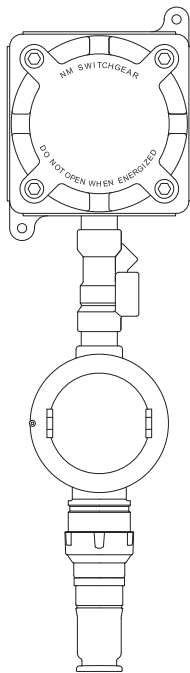
Dimensions are in mm.



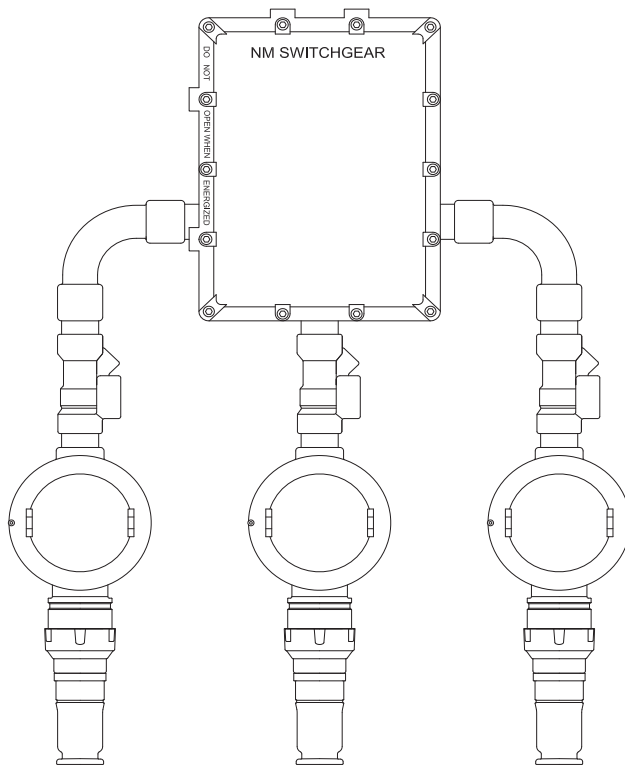
Sockets and plugs, 32 and 63 Amp  
D1: M32, M40 or NPT equivalent

Sockets and plugs, 16 and 25 Amp  
D2: M20, M25 or NPT equivalent

Plugs and sockets can be supplied directly connected to a voltage transformer, with or without supporting frame.



Single sockets and plugs  
supplied from a transformer



Group sockets and plugs  
supplied from a single transformer



Marking to ATEX 94/9/EC Directive: II 2 G / Ex d IIC T6 Gb / II 2 D Ex t IIIC T85°C Db IP66

Zone: 1, 2, 21, 22 , Gas Group IIC

Compliance with: IEC 60079-0:2007, IEC 60079-1:2007, IEC 60079-31:2008

EC Type Examination Certificate: ISSeP 11 ATEX 041

Production quality assurance notification: ISSeP 12 ATEX 026

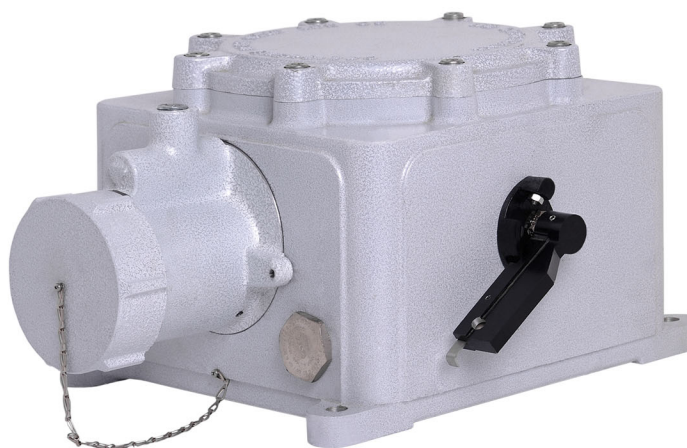


### FEATURES

- Plug and socket with cast aluminium housing suitable for petroleum and marine locations.
- Different rating up to 125 Amp. 2, 3 & 4 pins plus earth.
- Interlocked switched socket contacts on the unit are never accessible when live.
- Switching only possible when plug fully inserted and cannot be withdrawn with switch ON position.
- Nickel or tin plated brass pins embedded in bakelite pin holder.
- Stainless steel screws and M8 internal / external earth studs.
- Aluminium socket closing cover with chain.
- Cable entry can be from bottom or top side.
- Hub sizes: M40 ISO 965.1 metric as standard. NPT or other threads supplies on request.
- Finish: Electrostatic powder coated or two pack epoxy paint.



Plug



Socket

### OPTIONS

Voltage transformer in Ex 'd' housing for plugs & sockets operating on reduced voltages (24V ... 110V)

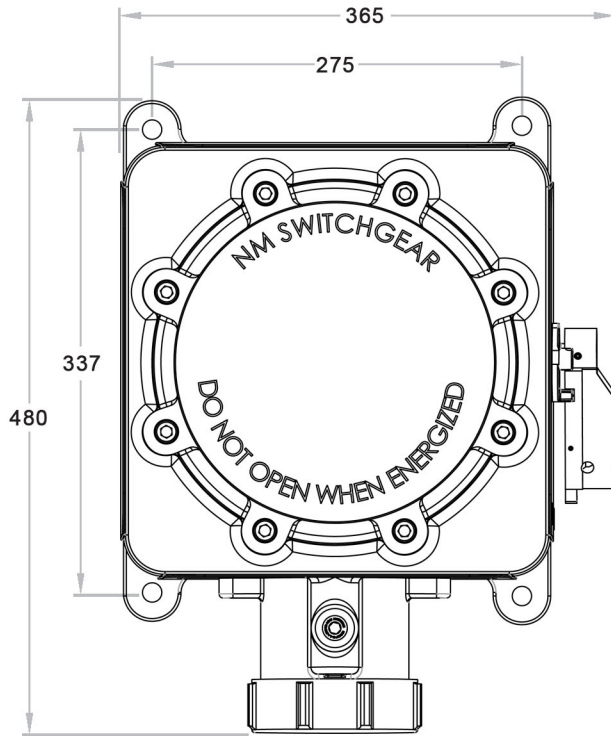
NPT or other threads cable entry.

Cable gland.

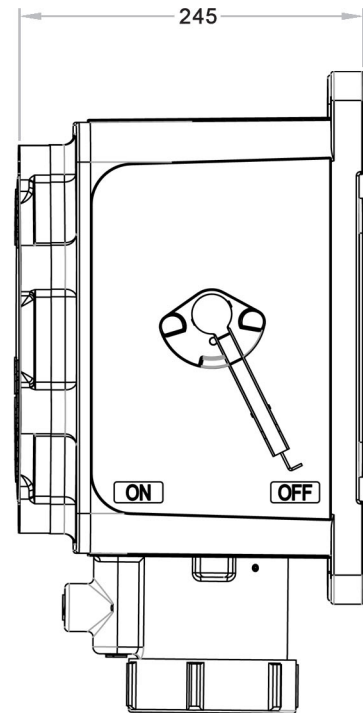
نور محور فارس  
تولید کننده تجهیزات الکتریکی ضد انفجار  
**NM SWITCHGEAR**  
Explosion Proof Electrical Supplies



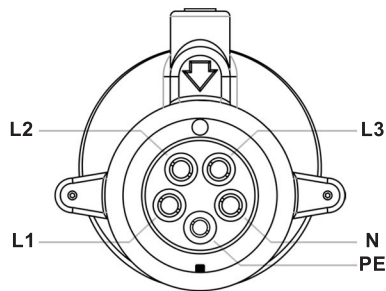
## NMSP.. Sockets and Plugs



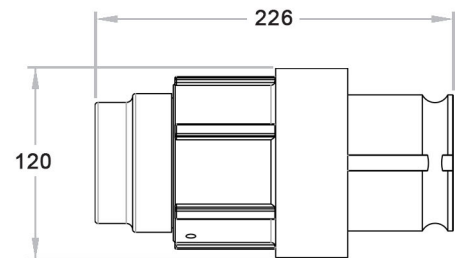
**Socket  
Top view**



**Socket  
Side view**



**Socket connection  
Front view**



**Plug  
Side view**

All dimensions are in mm.

Dimension shown are within manufacturing tolerances.